



Wheatfield Wrap



SPRING 2024 **WHEATFIELD** COMMUNITY

WHEATFIELD HOA BOARD

Townhome Directors

Rajit Garg - Treasurer
Afnan Khan
(open position) – please consider joining

Single Family Directors

Andy Mauer - Secretary
James Wang - Vice President
Justin Winchester - ARC
Committee Chair

Director At Large

Heather Walenga Wheeler -
President

**WHEATFIELD SPRING
ARC INSPECTIONS**

Starting
April
14th

APRIL 2024						
SUN	MON	TUE	WED	THU	FRI	SAT
	1	2	3	4	5	6
7	8	9	10	11	12	13
14	15	16	17	18	19	20
21	22	23	24	25	26	27
28	29	30				

SPRING ARC INSPECTION

Wheatfield is getting back on its annual spring inspection schedule. The inspections are expected to start during the week of April 14th. As you know, compliant homeowner maintenance is required 365 days a year. Still, it is strongly recommended that you look over your property before mid-April since it can be easy to overlook areas of opportunity. Please take a look at the self-inspect checklist in this newsletter based on the most common violations.

Spring
Clean-up

Wheatfield Neighborhood

NEW DATE: April 6th
8:30 am – 11 am

Corner of Wheatfield
& Littlefield

SPRING CLEANING

Join your neighbors for The Neighborhood annual clean up. Grab a morning treat and drop off trash at Wheatfield & Littlefield. Thank you Sara & Gillian for coordinating.

SIGN UP

<https://infohoa.cincwebaxis.com/mdwht>

ARC Inspection Self-Checklist

Garden and Lawn

- Trees limbs above sidewalks & neighboring driveways must be pruned to a minimum height of 7 feet
- Lawns must be kept at the height of 4 inches or less
- Gardens must be maintained, and weeds must be removed
- Shrubs / trees must be pruned and/or trimmed
- Deadwood and branches in shrubs / trees must be removed
- Tree stumps in the yard must be removed
- Dead trees must be removed and replaced

Major Building Structures

- Roof shingles must not be missing
- Rake boards must not be rotted or have peeling paint
- The siding must be clean
- Window screens must not be torn
- Window trim must not be rotted or have peeling paint
- Cracks in walkway, driveway, sidewalk must be repaired
- Chimney cap must not be rusted, or have peeled paint



Gutters and Downspouts

- Gutters must be cleaned out
- Downspouts must not be stained or dirty

Litter and Trash/Recycle

Trash and recycling containers must be stored in the garage, basement, or fence-enclosed backyard. Such containers must be kept from the front porch or in the front yard.

.

FOOD TRUCKS

WHEATFIELD NIEGHBORHOOD

SIGNBOARDS AND FACEBOOK FOR MORE DETAILS

- April 30 - Brick N Fire Pizza - 4-8 pm**
 - May 10 - Kona Ice 4-6 pm**
 - June 13 - Kona Ice 4-6 pm**
 - June 21 - Breaking the Bus Burger - TBA**
 - July 14 - Greek on the Street - 4-7 pm**
 - July 19 - Breaking the Border Tacos - TBA**
 - July 27 - Greek on the Street- 4-7 pm**
 - Sept 24 - Brick n Fire Pizza - 4-8 pm**
- Details are subject to change. View HOA signboards, website, or Facebook for current details. Thank you Erin for organizing.

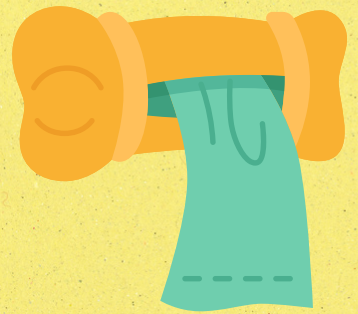


Pet Defecation

Wheatfield Dog Waste Stations Update

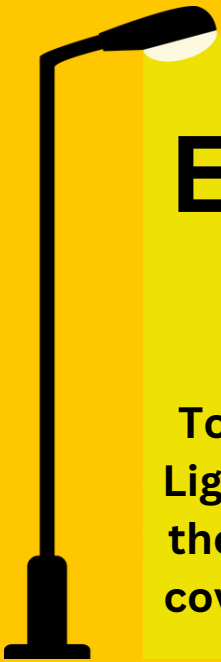
After some HOA contract negotiation, the landscapers will fill the dog waste stations while they are on site on Thursdays. Please notify HPS, the property management company, through the website if you note they are empty.

Owners are responsible for immediately removing pet defecation when off their property. We know that it can be hard to ensure your dog poops next to the Wheatfield-provided dog bag stations, so please walk your dog with your own dog bags to ensure prompt cleanup.



Electric Work

Townhouse Street Lights (#2 & #8) had the bulbs and clear coverings replaced.



Landscaping

Mow Map

Find this map & others on the website below:

<https://wheatfieldhoa.com/maps-commons/>



The remaining 2024 board meetings will be held on the 2nd Thursday of the month instead of the 3rd Thursday. The dates are therefore:

- June 13, 2024
- September 12, 2024
- October 10, 2024

Month Year						
Sun	Mon	Tue	Wed	Thu	Fri	Sat
29	30	31	01	02	03	04
05	06	07	08	09	10	11
12	13	14	15	16	17	18
19	20	21	22	23	24	25
26	27	28	29	30	31	01